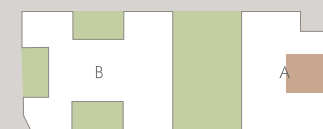


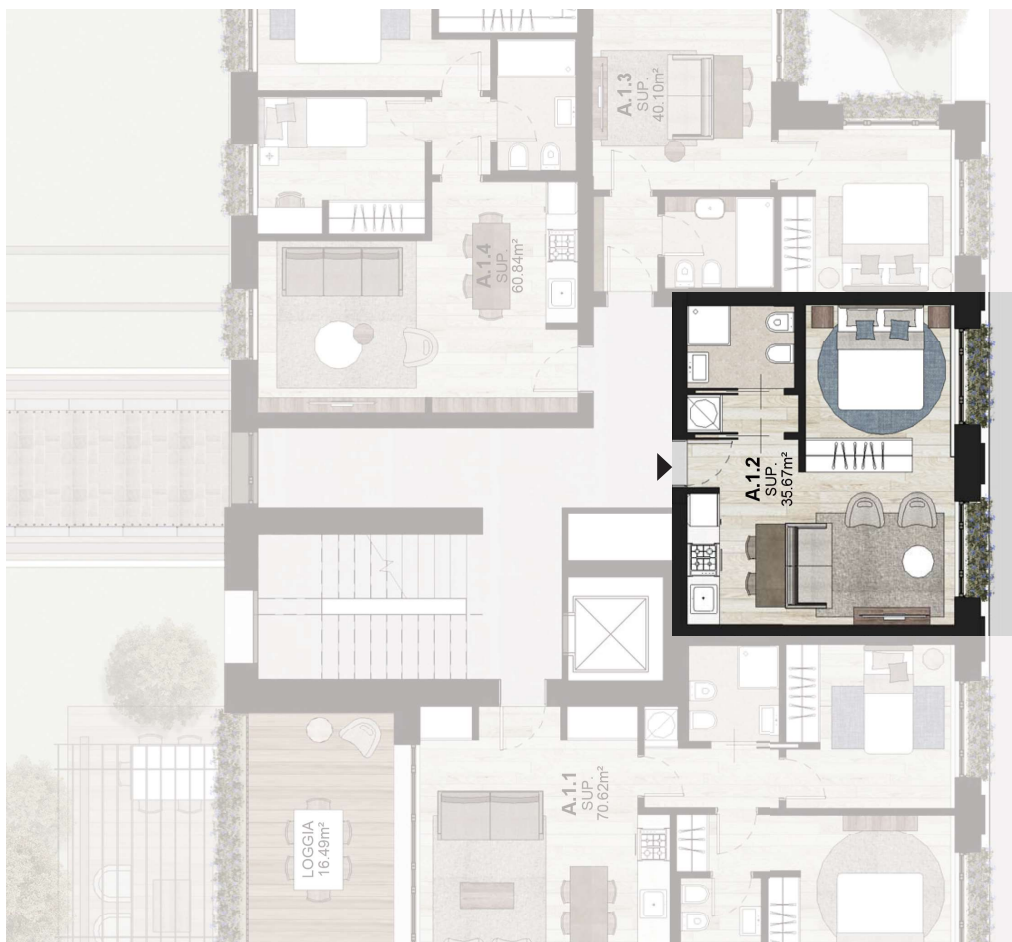
A.1.2



38,17
mq

Piano PRIMO
Corpo A

Appartamento (100%)	35,67	35,67
Giardini (33%)	-	-
Balconi/Logge (50%)	-	-
Terrazzi (33%)	-	-
Patii (33%)	-	-
Taverne (50%)	-	-
Sottotetti (50%)	-	-
Parti comuni (7%)		2,50



scala 1:100