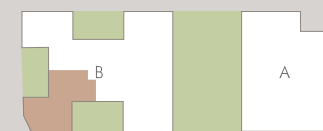


B.1.3



115,39
mq

Piano PRIMO
Corpo B

Appartamento (100%)	88,35	88,35
Giardini (33%)	-	-
Balconi/Logge (50%)	-	-
Terrazzi (33%)	38,99	19,50
Patii (33%)	-	-
Taverne (50%)	-	-
Sottotetti (50%)	-	-
Parti comuni (7%)		7,55



PIANO PRIMO



scala 1:100

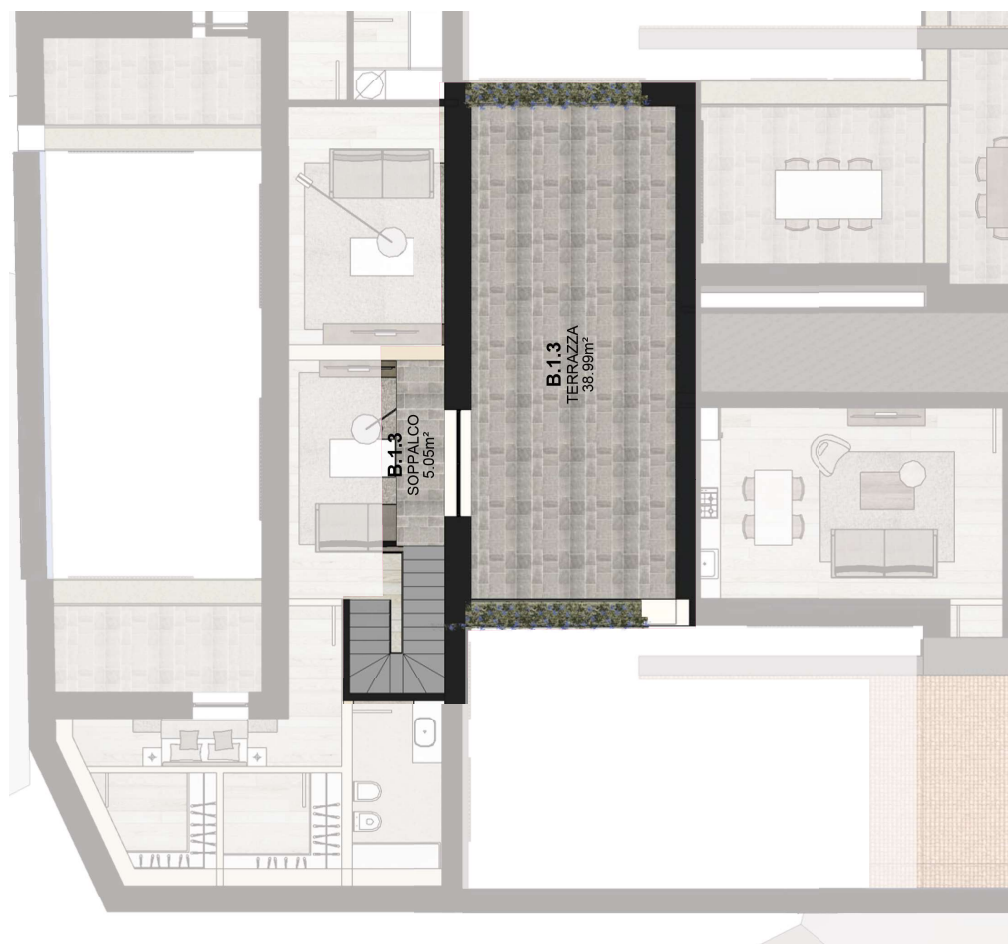
B.1.3



115,39
mq

Piano SECONDO
Corpo B

Appartamento (100%)	88,35	88,35
Giardini (33%)	-	-
Balconi/Logge (50%)	-	-
Terrazzi (50%)	38,99	19,50
Patii (33%)	-	-
Taverne (50%)	-	-
Sottotetti (50%)	-	-
Parti comuni (7%)		7,55



SOPPALCO



scala 1:100